
 Compartiment Inginerie Tehnologică	<b>Client:</b> ROMPETROL RAFINARE S.A. <b>PUNCT DE LUCRU RAFINĂRIA VEGA PLOIEȘTI</b>	Proiect nr. <b>MD</b> <b>1007.024</b>
	<b>Lucrare:</b> REPREZENTAREA GRAFICĂ A ZONELOR DE IMPACT DIN JURUL AMPLASAMENTULUI ÎN CARE SE POT MANIFESTA CONSECINȚELE UNUI ACCIDENT MAJOR	

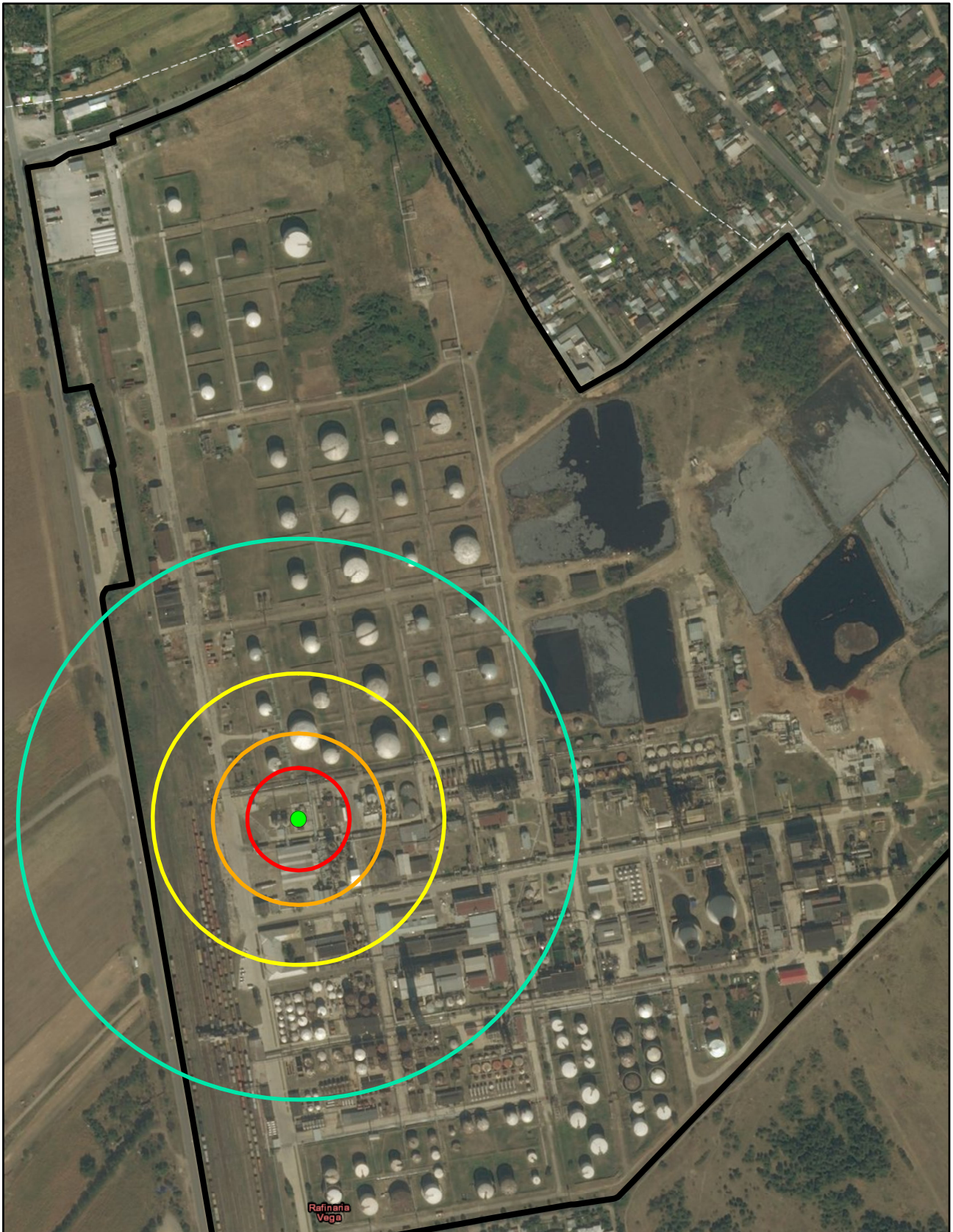
**Tabel cu scenariile de accident major cu efecte în afara amplasamentului  
 Rompetrol Rafinare - Punct de lucru Rafinăria Vega Ploiești**

Nr. Crt	Tipul evenimentului	Substanța periculoasă implicată	Locul de manifestare al evenimentului	Frecvența de manifestare	Dimensiunea zonelor de impact (m)			
					Zona I	Zona II	Zona III	Zona IV
1	Explozie <i>UVCE</i>	Citom	Vasul de preparare citom 120-C2	$10^{-5} \text{ an}^{-1}$	46	77	131	252
2	Explozie <i>UVCE</i>	Vapori de benzină ușoară	Coloana de rectificare 140-C2	$10^{-5} \text{ an}^{-1}$	42	71	121	233
3	Explozie <i>UVCE</i>	Vapori de hexan	Coloana de rectificare 140-C4	$10^{-5} \text{ an}^{-1}$	34	57	97	187
4	Explozie <i>UVCE</i>	Gaze de faclă	Vasul tampon faclă	$10^{-5} \text{ an}^{-1}$	36	60	102	196
5	Explozie <i>CVE</i>	Hexan	Rezervorul de hexan T8	$10^{-5} \text{ an}^{-1}$	31	52	89	172
6	Incendiu <i>pool fire</i>	Hexan	Rezervorul de hexan T8	$10^{-5} \text{ an}^{-1}$	37	54	70	107
7	Explozie <i>CVE</i>	Rafinat	Rezervorul de rafinat A54	$10^{-5} \text{ an}^{-1}$	33	56	95	184
8	Incendiu <i>pool fire</i>	Rafinat	Rezervorul de rafinat A54	$10^{-5} \text{ an}^{-1}$	46	66	83	124
9	Explozie <i>CVE</i>	Hexan	Rezervorul de hexan T7	$10^{-5} \text{ an}^{-1}$	31	52	89	172
10	Incendiu <i>pool fire</i>	Hexan	Rezervorul de hexan T7	$10^{-5} \text{ an}^{-1}$	37	54	70	107
11	Explozie <i>CVE</i>	Solvent ecologic	Rezervorul de solvent ecologic 30-60 A70	$10^{-5} \text{ an}^{-1}$	28	47	80	155

 Compartiment Inginerie Tehnologică	<b>Client:</b> ROMPETROL RAFINARE S.A. <b>PUNCT DE LUCRU RAFINĂRIA VEGA PLOIEȘTI</b>	Proiect nr. <b>MD</b> 1007.024
	<b>Lucrare:</b> REPREZENTAREA GRAFICĂ A ZONELOR DE IMPACT DIN JURUL AMPLASAMENTULUI ÎN CARE SE POT MANIFESTA CONSECINȚELE UNUI ACCIDENT MAJOR	

Nr. Crt	Tipul evenimentului	Substanța periculoasă implicată	Locul de manifestare al evenimentului	Frecvența de manifestare	Dimensiunea zonelor de impact (m)			
					Zona I	Zona II	Zona III	Zona IV
12	Incendiu <i>pool fire</i>	Solvent ecologic	Rezervorul de solvent ecologic 30-60 A70	$10^{-5} \text{ an}^{-1}$	33	49	63	96
13	Explozie <i>CVE</i>	Light naphtha tip II	Rezervorul de light naphtha tip II - A8	$10^{-5} \text{ an}^{-1}$	42	70	119	230
14	Explozie <i>CVE</i>	Light naphtha tip II	Rezervorul de light naphtha tip II - A23	$10^{-5} \text{ an}^{-1}$	42	70	119	230
15	Incendiu <i>pool fire</i>	Păcură 40-50	Rezervorul de păcură 40-50- T13	$10^{-5} \text{ an}^{-1}$	26	35	44	65
16	Incendiu <i>pool fire</i>	Combustibil tip P	Rezervorul de combustibil tip P B172	$10^{-5} \text{ an}^{-1}$	19	27	35	55

În continuare sunt prezentate hărțile aferente scenariilor prezentate în tabel.



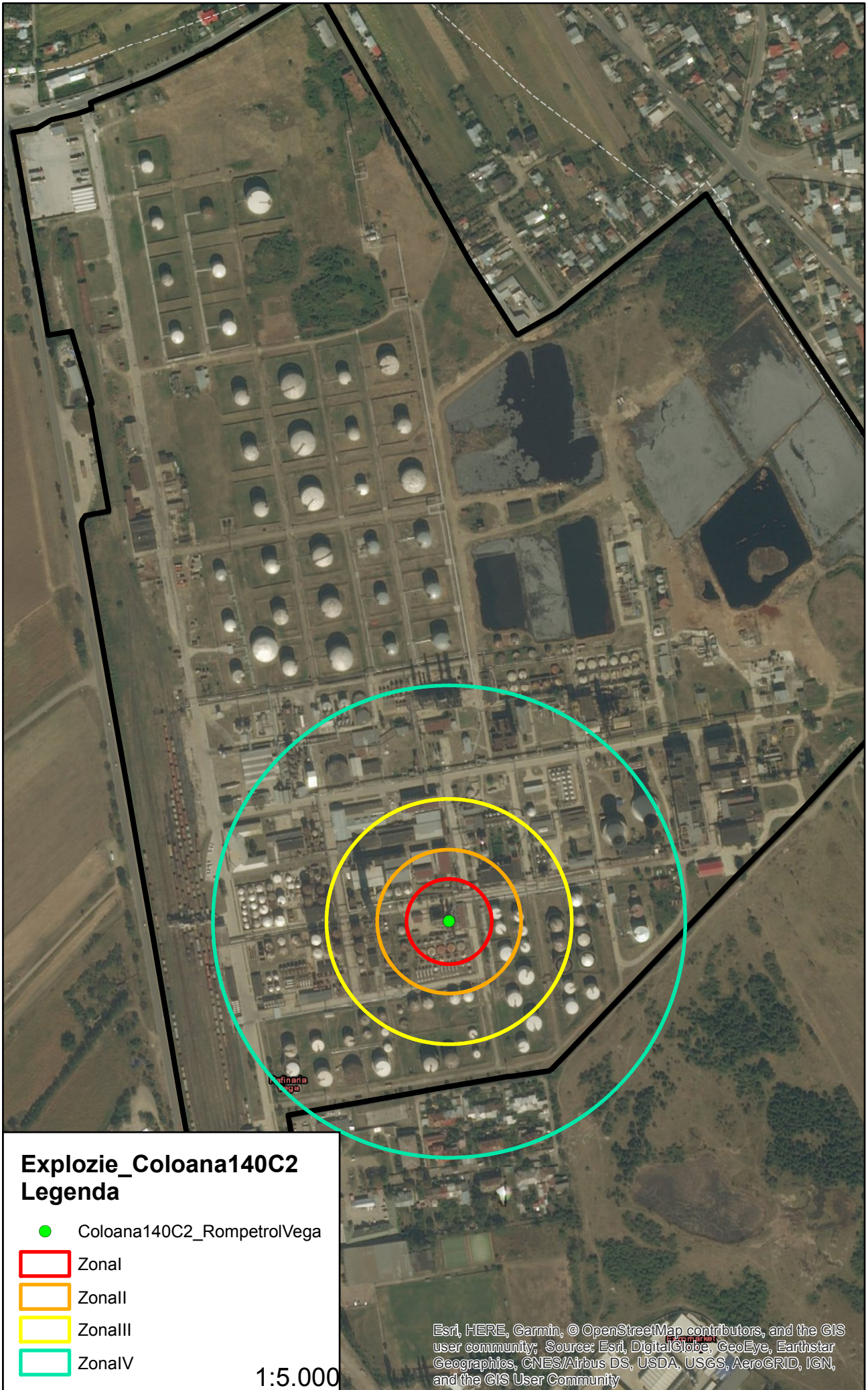
**Explozie\_Vas\_citom120C2  
Legenda**

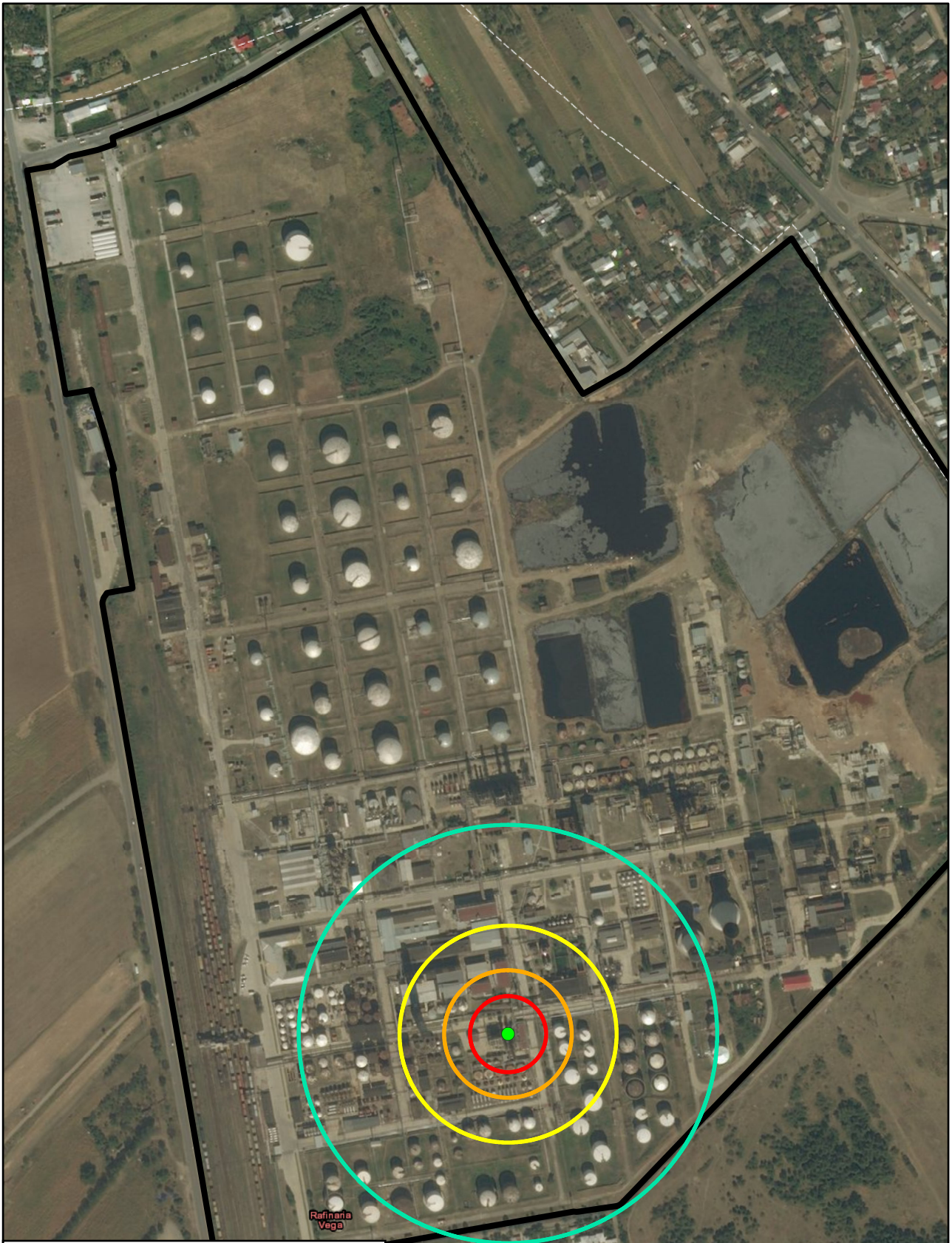
- Vas\_citom120C2\_RompetrolVega
- Zonal
- Zonall
- Zonalll
- ZonalV

1:5.000

1:5.000

Esri, HERE, Garmin, © OpenStreetMap contributors, and the GIS user community; Source: Esri, DigitalGlobe, GeoEye, Earthstar Geographics, CNES/Airbus DS, USDA, USGS, AeroGRID, IGN, and the GIS User Community





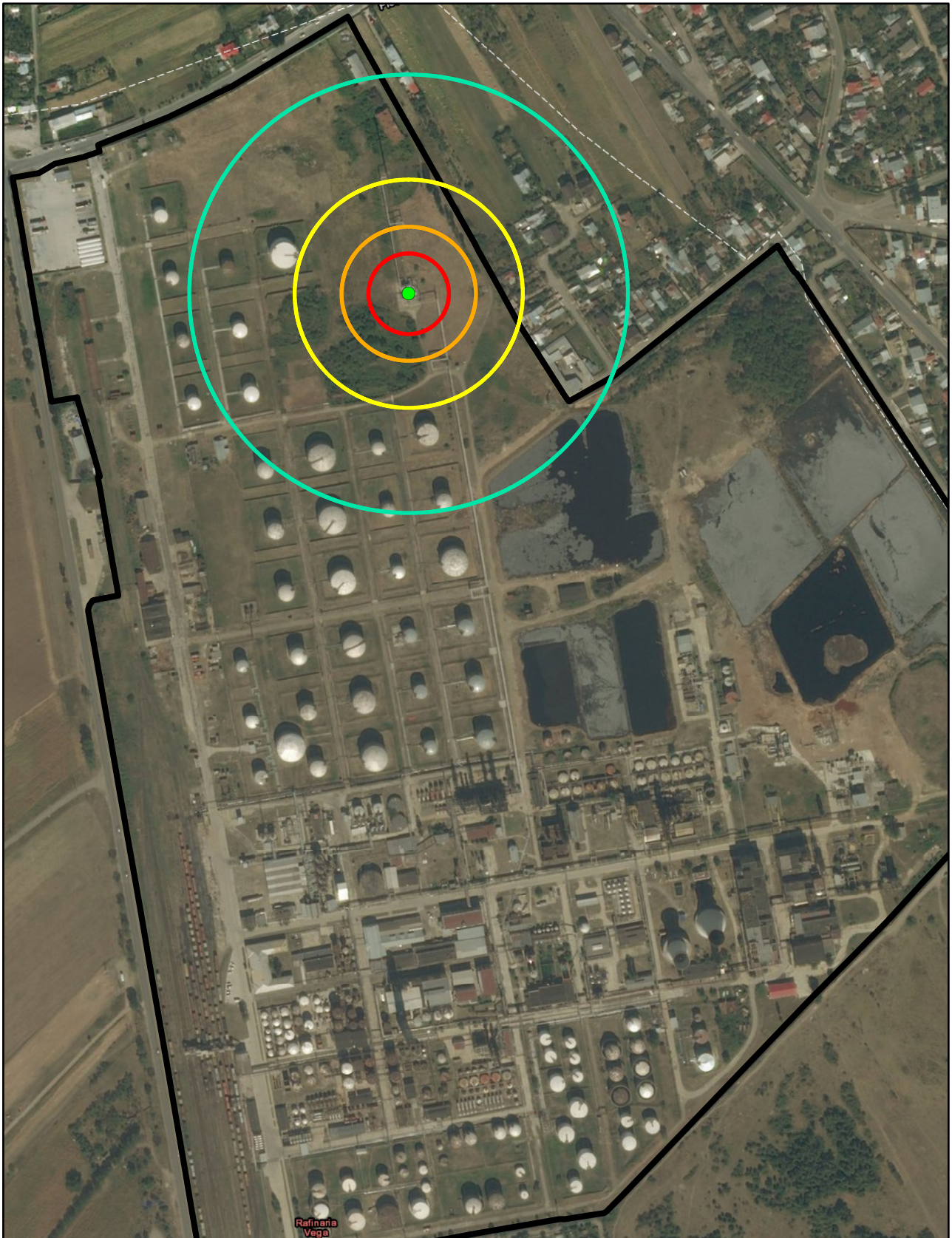
**Explozie\_Coloana140C4  
Legenda**

- Coloana140C4\_RompetrolVega
- Zonal
- Zonall
- Zonalll
- ZonalV

1:5.000

1:5.000

Esri, HERE, Garmin, © OpenStreetMap contributors, and the GIS user community; Source: Esri, DigitalGlobe, GeoEye, Earthstar Geographics, CNES/Airbus DS, USDA, USGS, AeroGRID, IGN, and the GIS User Community

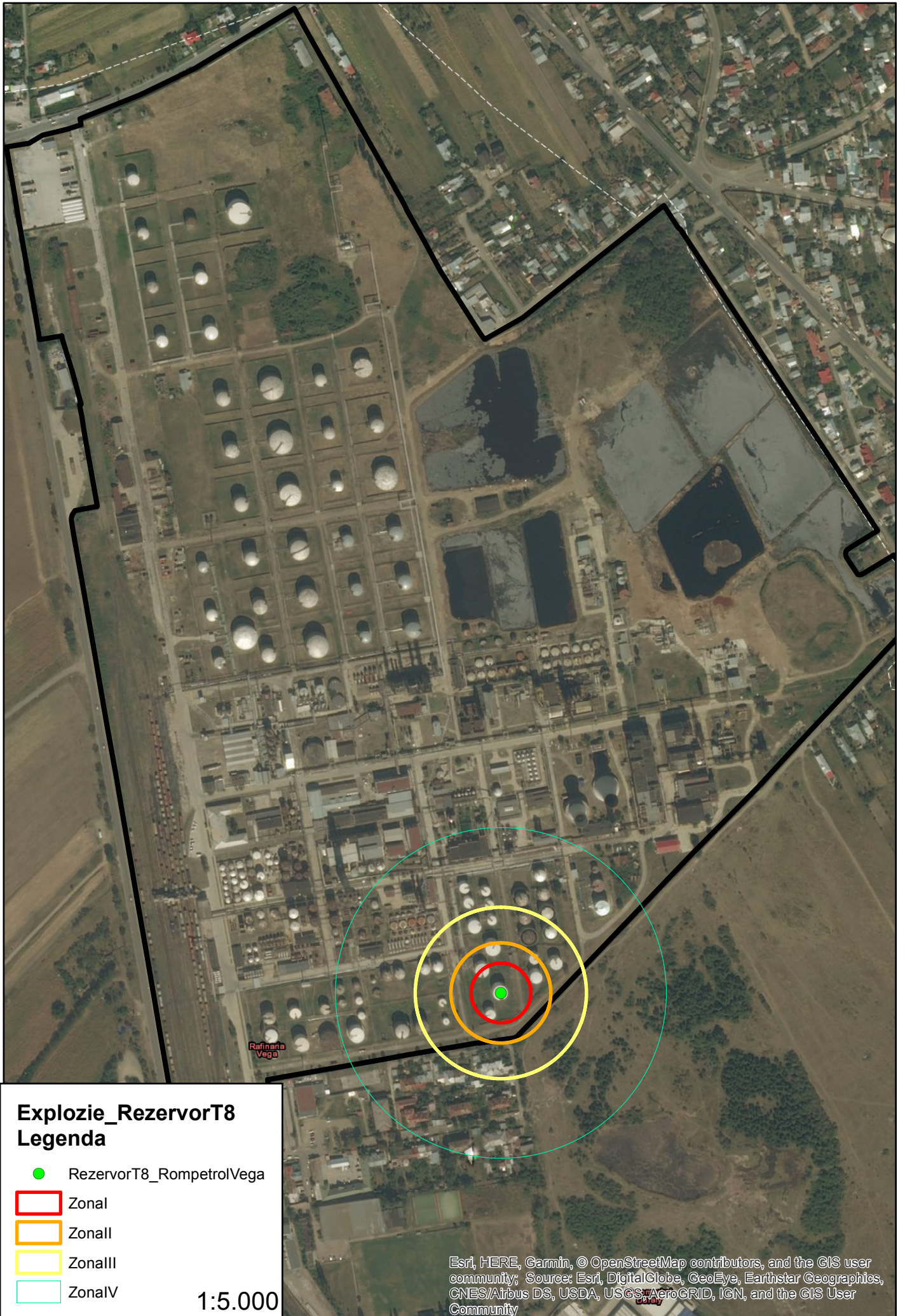


## Explozie\_Vas\_tampon\_facila Legenda

- Vas\_tampon\_facila\_RompetrolVega
- Zonal
- Zonall
- Zonalll
- ZonalV

1:5.000

Esri, HERE, Garmin, © OpenStreetMap contributors, and the GIS user community; Source: Esri, DigitalGlobe, GeoEye, Earthstar Geographics, CNES/Airbus DS, USDA, USGS, AeroGRID, IGN, and the GIS User Community



### Explozie\_RezervorT8 Legenda

- RezervorT8\_RompetrolVega
- Zonal
- Zonall
- Zonalll
- ZonalV

1:5.000

Esri, HERE, Garmin, © OpenStreetMap contributors, and the GIS user community; Source: Esri, DigitalGlobe, GeoEye, Earthstar Geographics, CNES/Airbus DS, USDA, USGS, AeroGRID, IGN, and the GIS User Community



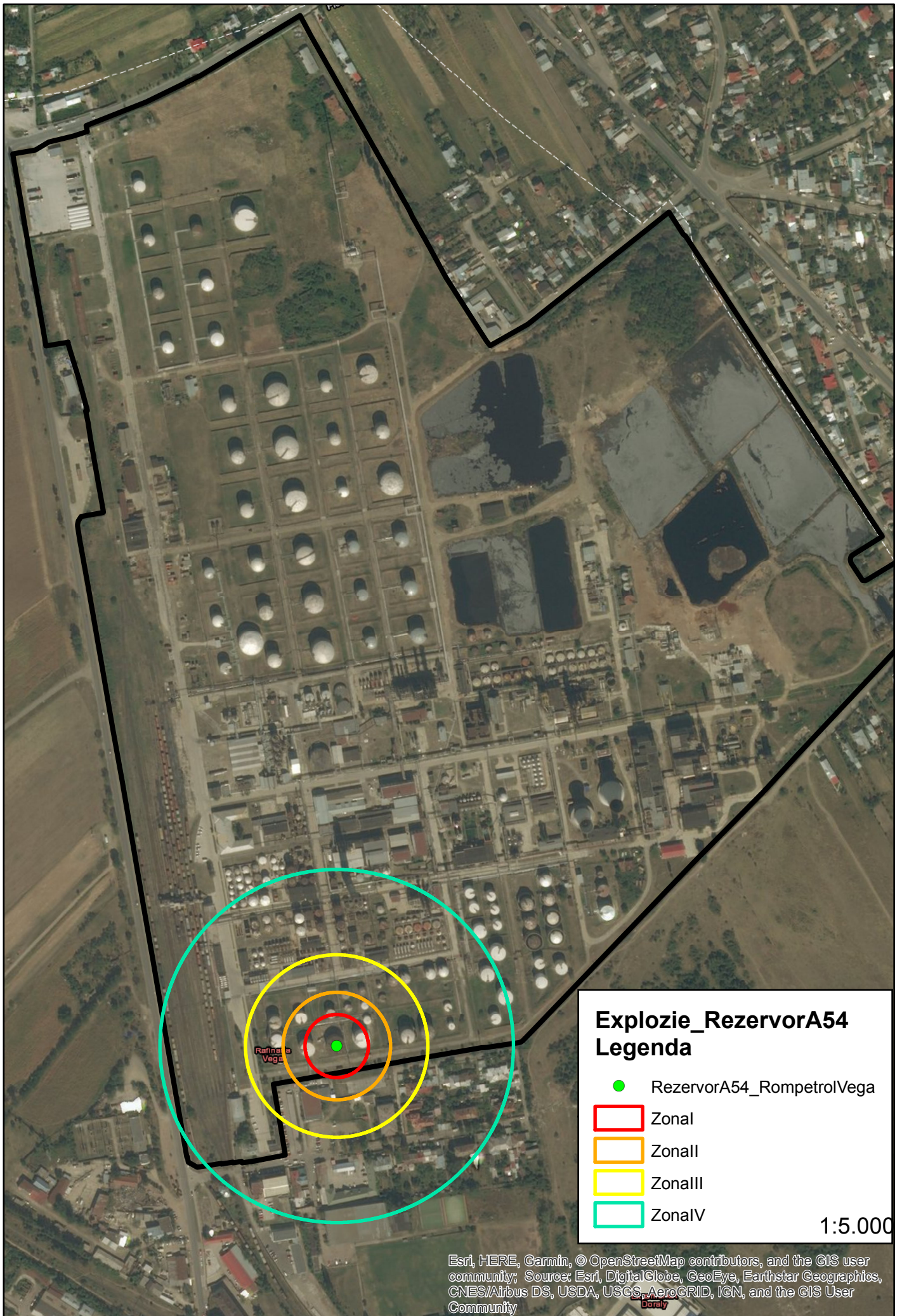
### Incendiu\_RezervorT8 Legenda

- RezervorT8\_RompetrolVega
- Zonal
- ZonalI
- ZonalII
- ZonalIV

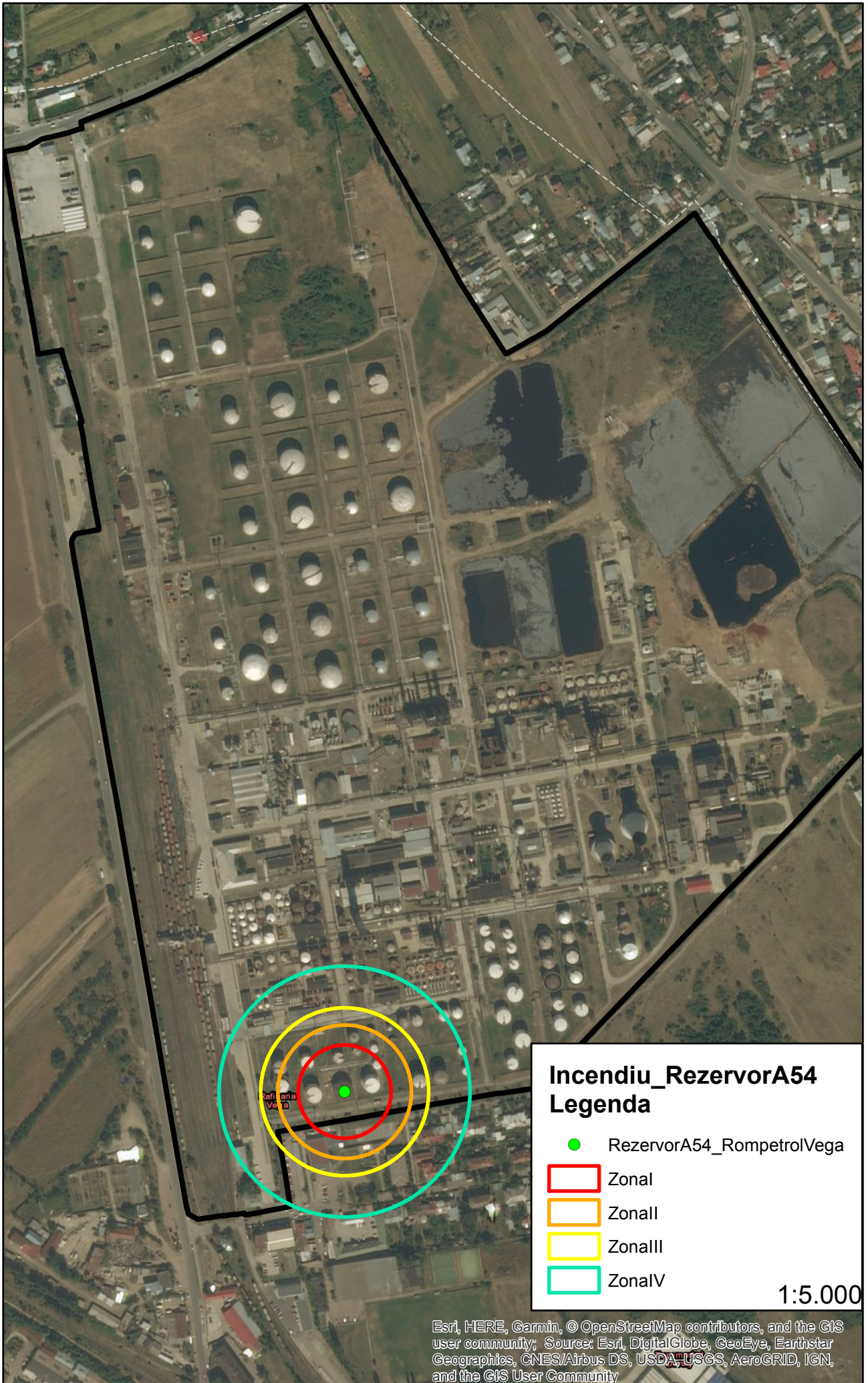
1:5.000

Esri, HERE, Garmin, © OpenStreetMap contributors, and the GIS user community; Source: Esri, DigitalGlobe, GeoEye, Earthstar Geographics, CNES/Airbus DS, USDA, USGS, AeroGRID, IGN, and the GIS User Community

Expomarket



Esri, HERE, Garmin, © OpenStreetMap contributors, and the GIS user community; Source: Esri, DigitalGlobe, GeoEye, Earthstar Geographics, CNES/Airbus DS, USDA, USGS, AeroGRID, IGN, and the GIS User Community

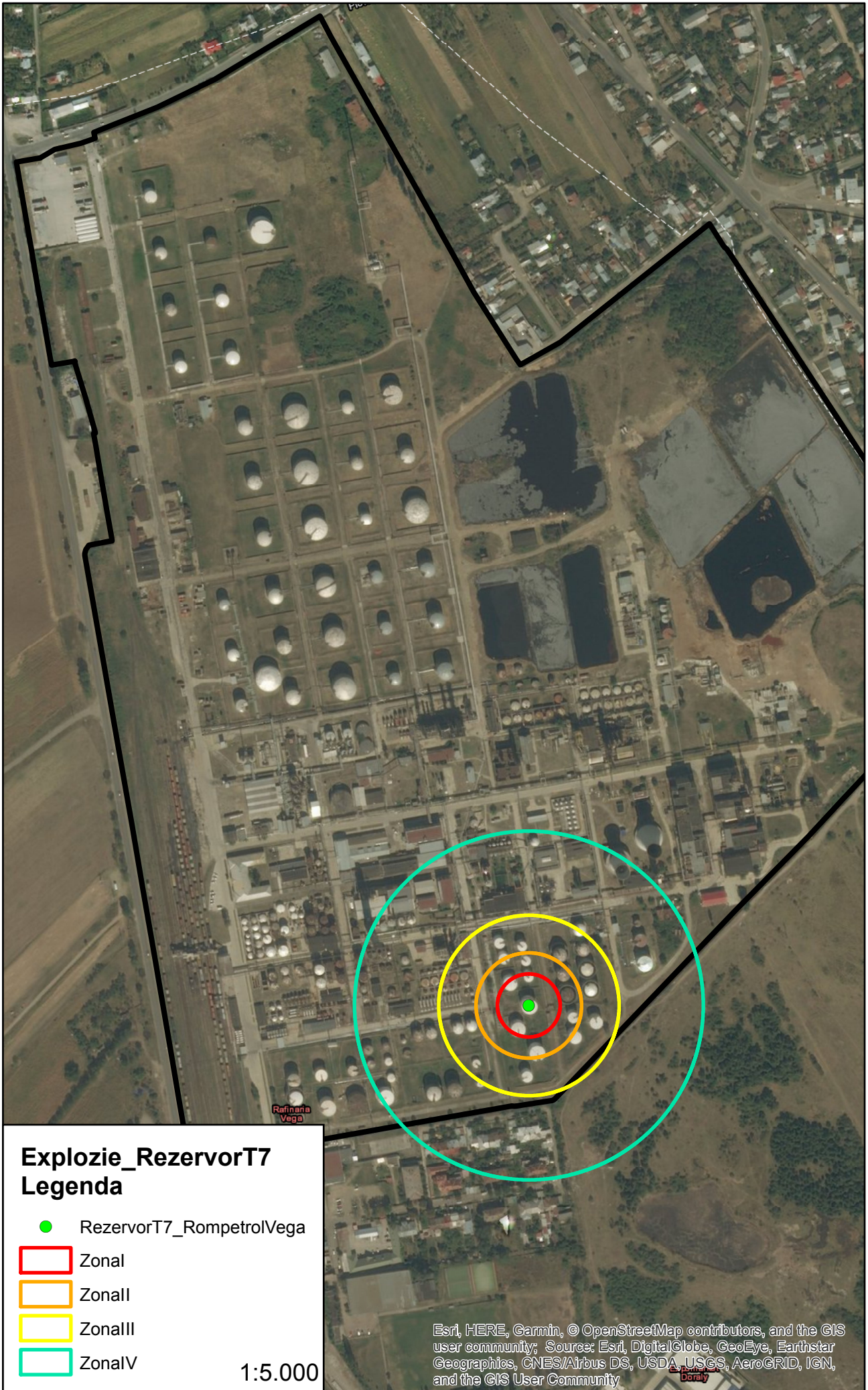


### Incendiu\_RezervorA54 Legenda

- RezervorA54\_RompetroVega
- Zonal
- Zonall
- Zonalll
- ZonalV

1:5.000

Esri, HERE, Garmin, © OpenStreetMap contributors, and the GIS user community; Source: Esri, DigitalGlobe, GeoEye, Earthstar Geographics, CNES/Airbus DS, USDA, USGS, AeroGRID, IGN, and the GIS User Community

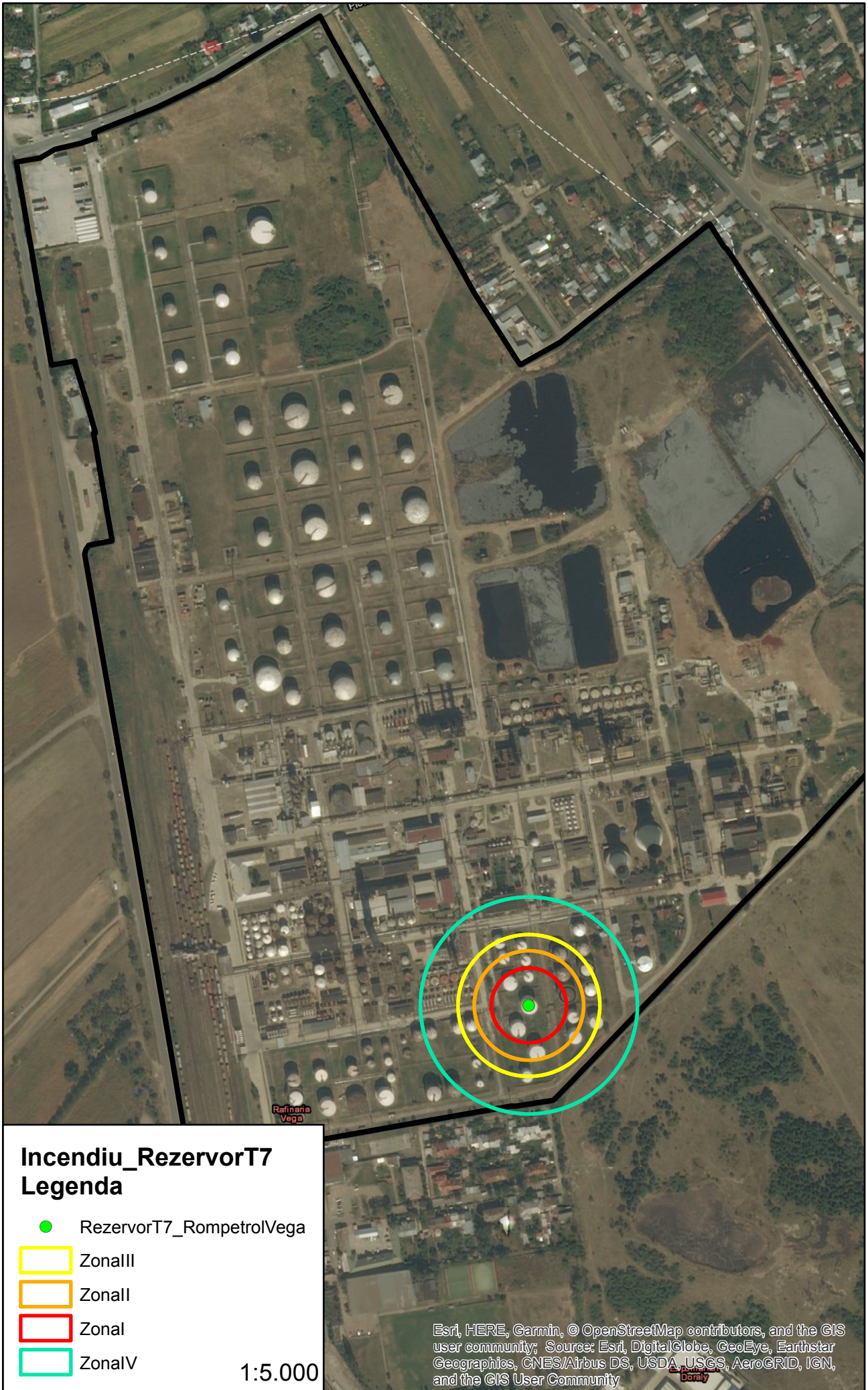


### Explozie\_RezervorT7 Legenda

- RezervorT7\_RompetrolVega
- Zonal
- Zonall
- Zonalll
- ZonalV

1:5.000

Esri, HERE, Garmin, © OpenStreetMap contributors, and the GIS user community; Source: Esri, DigitalGlobe, GeoEye, Earthstar Geographics, CNES/Airbus DS, USDA, USGS, AeroGRID, IGN, and the GIS User Community

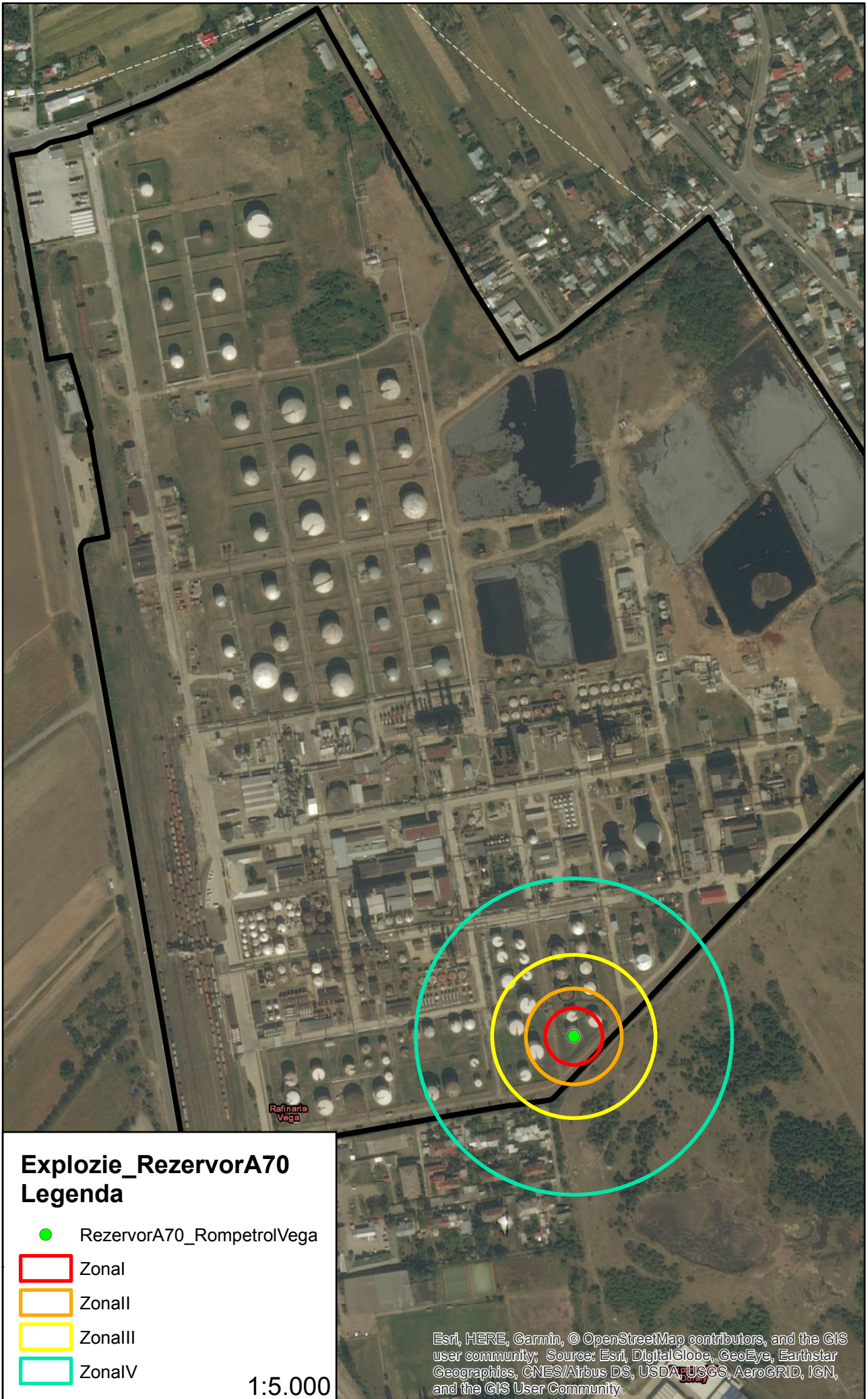


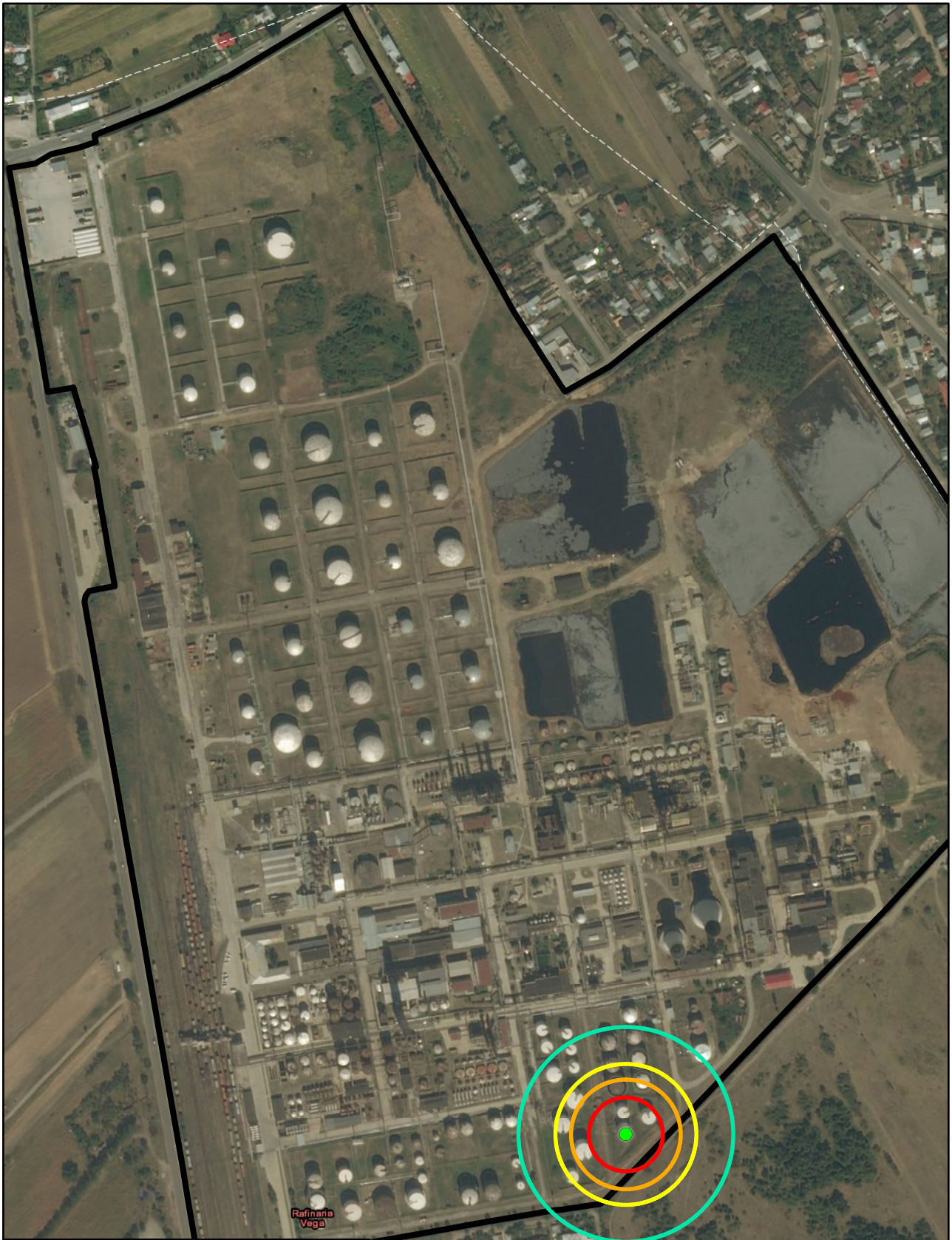
**Incendiu\_RezervorT7  
Legenda**

- RezervorT7\_RompetrolVega
- Zonalll
- Zonall
- Zonal
- ZonalV

1:5.000

Esri, HERE, Garmin, © OpenStreetMap contributors, and the GIS user community; Source: Esri, DigitalGlobe, GeoEye, Earthstar Geographics, CNES/Airbus DS, USDA, USGS, AeroGRID, IGN, and the GIS User Community



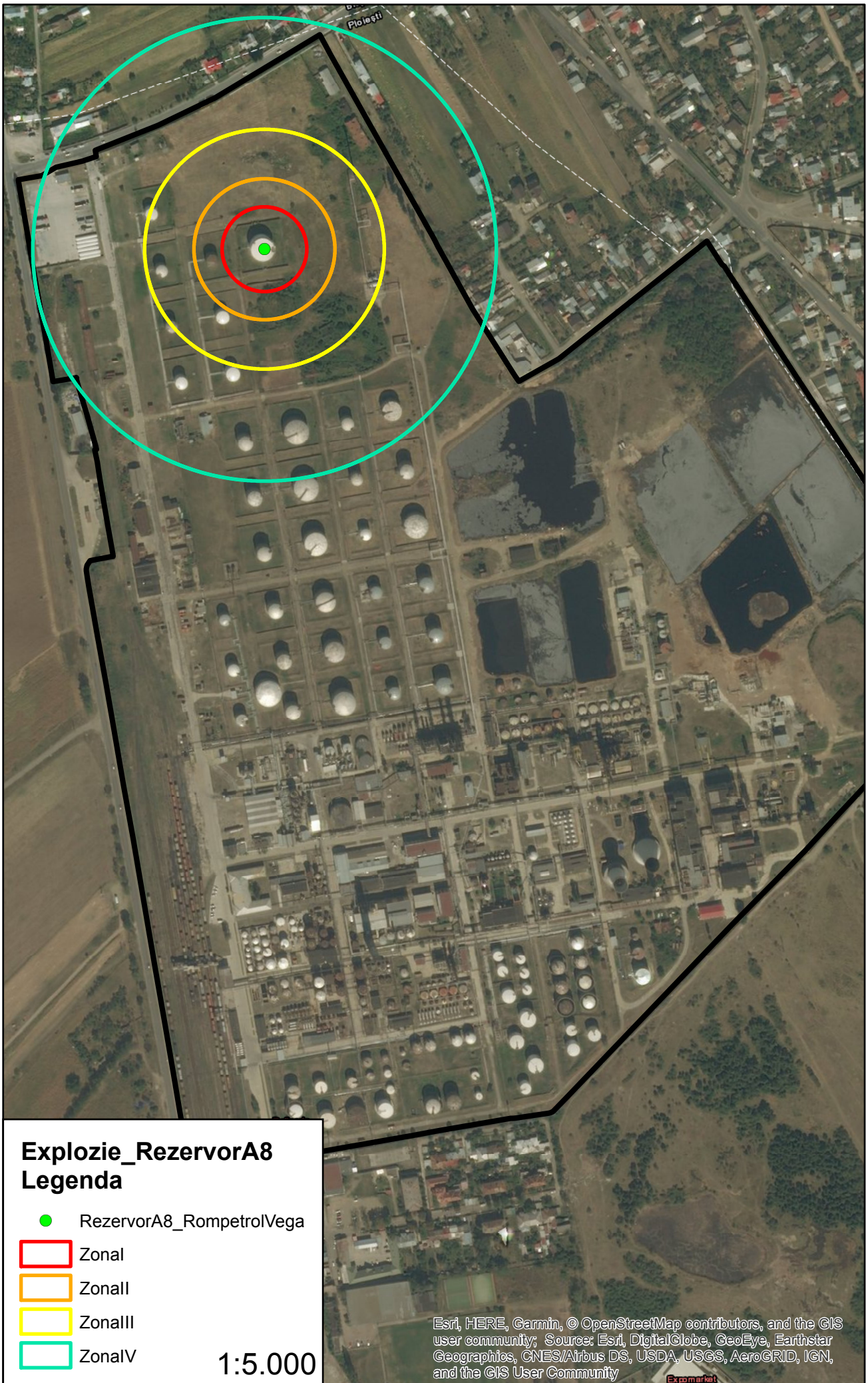


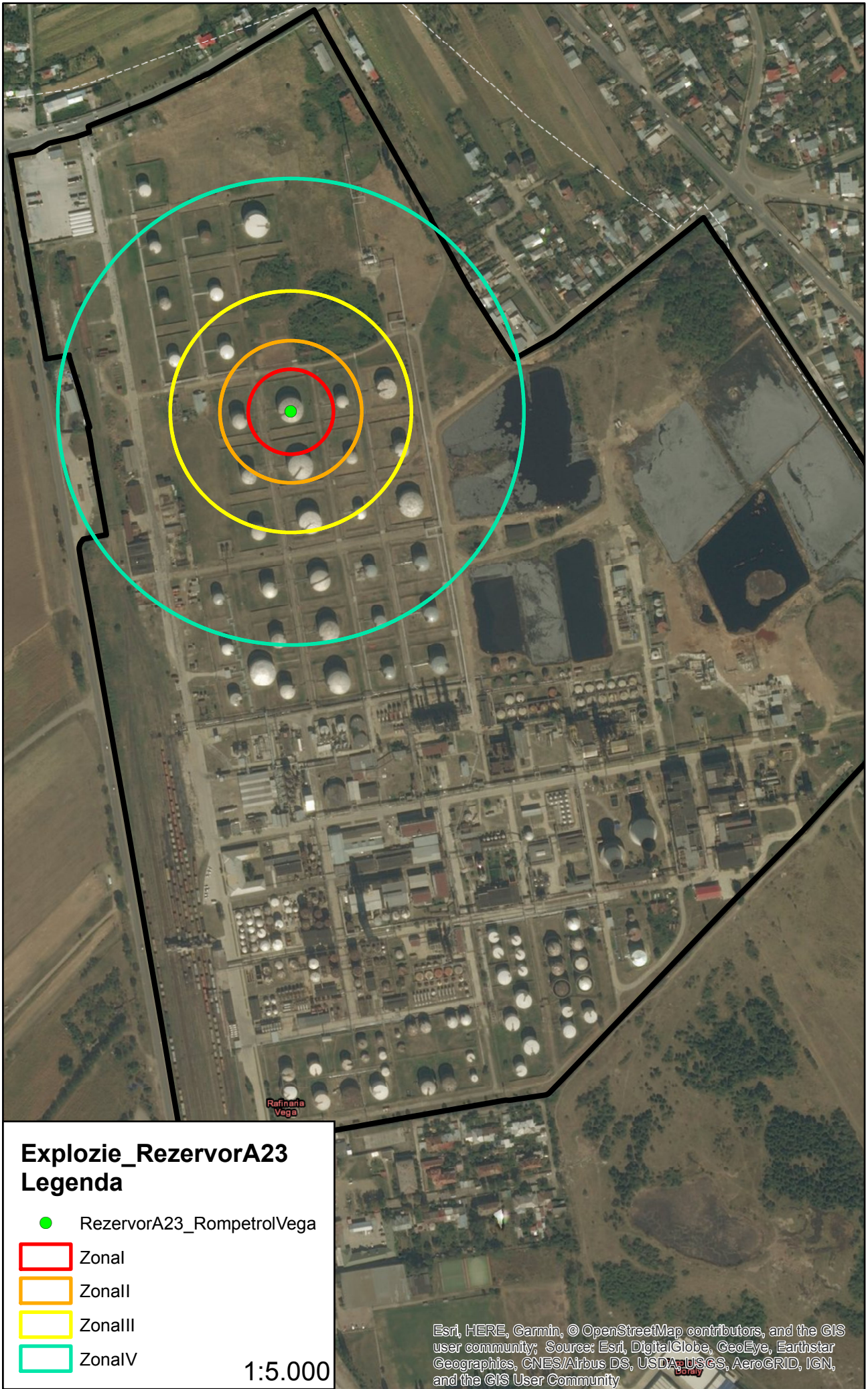
**Incendiu\_RezervorA70  
Legenda**

- RezervorA70\_RompetrolVega
- Zonal
- Zonall
- Zonalll
- ZonalV

1:5.000

Esri, HERE, Garmin, © OpenStreetMap contributors, and the GIS user community; Source: Esri, DigitalGlobe, GeoEye, Earthstar Geographics, CNES/Airbus DS, USDA, USGS, AeroGRID, IGN, and the GIS User Community







### Incendiu\_RezervorT13 Legenda

- RezervorT13\_RompetrolVega
- Zonal
- Zonall
- Zonalll
- ZonalV

1:5.000

Esri, HERE, Garmin, © OpenStreetMap contributors, and the GIS user community; Source: Esri, DigitalGlobe, GeoEye, Earthstar Geographics, CNES/Airbus DS, USDA, USGS, AeroGRID, IGN, and the GIS User Community



## Incendiu\_RezervorB172 Legenda

- RezervorB172\_RompetrolVega
- Zonal
- Zonall
- Zonalll
- ZonalV

1:5.000